

NIOSCAN

NIOSCAN

IOHEXOL INJECTION USP

Low Osmolar - Water Soluble - Iodinated
Non - Ionic Contrast Media

- Low osmolality.
- Low inhibition of enzyme activity.
- Low systemic toxicity.
- Low chemotoxicity.
- Low serum protein binding.
- Lesser influence on haemodynamic parameters.
- Little effect on coagulation.
- Low erythrocyte deformability.

NIOSCAN does not cross the intact blood brain barrier.

NIOSCAN does not lead to vacuolisation in cells of the proximal renal tubule.

NIOSCAN has minimal effects on blood pressure & heart rate.

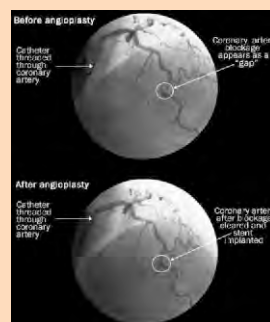


Contrast-enhanced CT scan of the chest reveals: A hypoplastic left lung with unilateral emphysema.



Axial Contrast-enhanced computed tomography (CT) image of upper abdomen shows excessive intra-abdominal fat deposition.

Iohexol	51.8%	64.7%	75.5%
Iodine Concentration	240 mg/ml	300 mg/ml	350 mg/ml
pH	7.2 ± 0.4	7.2 ± 0.4	7.2 ± 0.4
Viscosity (mPa*s)			
@ 37°C	3.3	6.1	10.6
@ 20°C	5.6	11.6	23.3
Osmolality (mOsm/g H ₂ O)			
@ 37°C	0.51	0.64	0.78



Coronary Angioplasty

High on images & safety



DOSAGE AND ADMINISTRATION

General

The dosage varies depending on the types of examination, age, weight, cardiac output and general condition of the patient and the technique used. Usually the same iodine concentration and volume is used as with other iodinated X-ray contrast media in current use. Adequate hydration should be assured before and after administration as for other contrast media. For intravenous, intra-arterial and intrathecal use and use in body cavities. The following dosages may serve as a guide.

STORAGE :

Store at controlled room temperature 20°C to 30°C. Do not freeze. Protect from direct sunlight and secondary x-rays. Inspect container for particulate matter before use. Discard unused portion.

CONTRAINDICATIONS : PRESENTATION :

INDICATIONS	NIOSCAN 240	NIOSCAN 300	NIOSCAN 350
MYELOGRAPHY Lumbar and thoracic myelography Cervical myelography CT Cisternography	8 - 12 ml 6 - 10 ml 4 - 12 ml 6 - 8 ml
ARTERIOGRAPHIES (Volume per Injection depends on site of Injection.) Aortography Femoral Various Selective Cerebral Arch Aortography	30 - 40 ml 30 - 50 ml / Inj. Depending on type of examination 5 - 10 ml / Inj. 30 - 40 ml / Inj.	40 - 60 ml / Inj. 30 - 50 ml / Inj.
CARDIOANGIOGRAPHY Adults Left ventricle and aortic root Inj. Selective Coronary arteriography Children Digital Subtraction angiography (I.A.) 1 - 15 ml / Inj. Depending on examination (max 8 ml / kg b.w.) 1 - 15 ml / Inj.	30 - 60 ml / Inj. 4 - 8 ml / Inj. Depending on examination (max 8 ml / kg b.w.)
UROGRAPHY Adults Children < 7 kg Children > 7 kg 4 ml / kg b.w. 3 ml / kg b.w. (Max.40 ml)	40 - 80 ml 3 ml / kg b.w. 2 ml / kg b.w. (Max. 40 ml)	40 - 80 ml
PHLEBOGRAPHY (Leg)	20 - 100 ml / leg	20 - 100 ml / leg
DIGITAL SUBTRACTION ANGIOGRAPHY (I.V.)	20 - 60 ml / Inj.	20 - 60 ml / Inj.
COMPUTERISED TOMOGRAPHY Adults Children	100-250ml (Total Amt of Iodine usually 30g-60g) 2-3ml/kg b.w. (Upto 40ml)	100-200ml (Total Amt of Iodine usually 30g-60g) 1-3ml/kg b.w. (Upto 40ml)	100-150ml (Total Amt of Iodine usually 60g-60g)
BODY CAVITIES ARTHROGRAPHY ERP / ERCP HERNIOGRAPHY HYSTEROSALPINGOGRAPHY SIALOGRAPHY	5 - 20 ml 20 - 50 ml 50 ml 15 - 50 ml 0.5 - 2 ml	5 - 15 ml 15 - 25 ml 0.5 - 2 ml	5 - 10 ml
CT ENHANCEMENT (Oral use) Adults Children	100 - 250 ml 1-3 ml/kg b.w. Up to 40 ml	100 - 200 ml 1 - 3 ml/kg b.w. Up to 40 ml	100 - 150 ml
GASTROINTESTINAL STUDIES	Depending on examination	Depending on examination	Depending on examination

Manifest thyrotoxicosis. History of serious reaction to IOHEXOL.

NIOSCAN 240 : Single dose vial of 50 ml.

NIOSCAN 300 : Single dose vial of 10ml, 20ml, 40ml, 50ml & 100ml.

NIOSCAN 350 : Single dose vial of 20ml, 40ml, 50ml & 100ml.



Manufactured in India by :

UNIJULES

LIFE SCIENCES LTD.
D-82, MIDC Area, Hingna,
Nagpur - 440028 (M.S.)